



# 2017



..... **1**

..... **3**

        ..... **4**

                ..... 4

                ..... 4

                ..... 4

                ..... 6

                ..... 7

..... 9

        ..... 9

        ..... 10

        ..... 10

        ..... 11

..... 12

..... 12

..... 16

..... 17

        ..... 20

..... **21**

        / ..... 21

                ..... 21

                ..... 22

                ..... 25

                ..... 25

                ..... 25

                ..... 26

                ..... 26

..... **27**

..... 27

        ..... 27

        ..... 28

        ..... 28

        ..... 30

        ..... 31

        ..... 31

                ..... 32

                ..... 33

..... 34

        ..... 34

                ..... 35

..... 37

..... 38

..... 38

..... 38

..... 39

..... 39

..... 41

..... 41

..... 42

..... **43**

..... 43

..... 44

..... 44

..... 45

..... **46**

..... 46

..... 46

..... 47

..... 48

..... 48

..... 48

..... 48

..... 48

..... 48

..... 48

..... 48

..... 49

..... 49

..... **50**

..... 50

..... 50

..... 51

..... 51

..... 52

..... 52

..... 52

..... 53

..... 54

..... 54

..... 54

..... 55

..... 55

..... 56

# 2017

1980 2002  
2004 2010  
2011  
1985 2015 ,  
30 30  
61 100  
2003  
2009  
2014  
2015  
820  
2015 2016 2017  
11 9 1929  
685 250 2016RoboCup 20  
21 RoboCup 7 6  
98.51% 70% 56% 2016

		1	4	15	
	11	1	43	2	
4			4	11	2015
2016	4				
		3.19	226.21		
	202			62	
					2015 2016
		2017			

2013 25

2017

1.

2017 8 31

2.

1 2017

2017

2017 6 22	11 13	3469
89.06%	79.41%	
3093		

2

2017 6 22 11 13 , 195

七

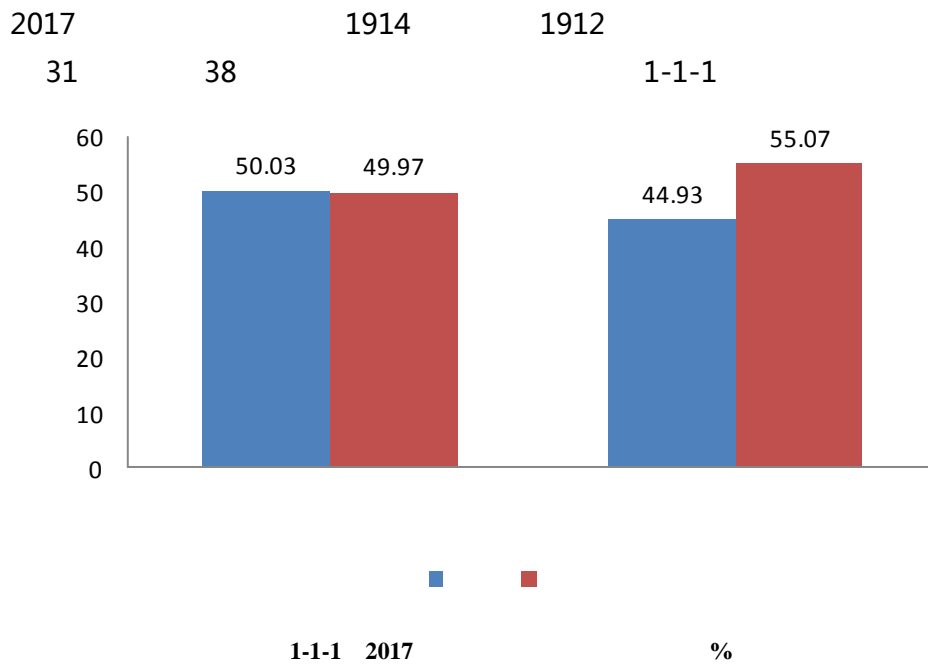
2017                                  3895                                  3826                                  14  
 54    69    1-1-1

	1-1-1	2017	%
		149	3.89
		108	2.82
		55	1.44
		50	1.31
		49	1.28
		47	1.23
		<b>458</b>	<b>11.97</b>
		180	4.70
		92	2.40
		54	1.41
		49	1.28
		<b>375</b>	<b>9.79</b>
		130	3.40
		93	2.43
		88	2.30
		<b>311</b>	<b>8.13</b>
		126	3.29
		93	2.43
		91	2.38
		<b>310</b>	<b>8.10</b>
		142	3.71
		86	2.25
		74	1.93
		<b>302</b>	<b>7.89</b>

			%
		140	3.66
		77	2.01
		41	1.07
		39	1.02
		<b>297</b>	<b>7.76</b>
		88	2.30
		87	2.27
		73	1.91
		42	1.10
		<b>290</b>	<b>7.58</b>
		176	4.60
		97	2.54
		<b>273</b>	<b>7.14</b>
		57	1.49
		55	1.44
		49	1.28
		40	1.05
		30	0.78
		28	0.73
	( )	1	0.03
		<b>260</b>	<b>6.80</b>
		135	3.53
		49	1.28
		44	1.15
		<b>228</b>	<b>5.96</b>
		84	2.20
		49	1.28
		45	1.18
		28	0.73
		3	0.08
		<b>209</b>	<b>5.47</b>
		102	2.67
		35	0.91
		33	0.86



			%
		22	0.58
	( )	1	0.03
		<b>193</b>	<b>5.05</b>
		96	2.51
		47	1.23
		40	1.05
		<b>183</b>	<b>4.79</b>
		89	2.33
		48	1.25
		<b>137</b>	<b>3.58</b>
		<b>3826</b>	<b>100.00</b>



2017 3252  
 85.00% 1-1-2  
 592 15.47% 11.47%  
 10.85% 1-1-3 2017 1-1-4

**1-1-2 2017**

		%
	3252	85.00
	79	2.06
	57	1.49
	50	1.31
	48	1.25
	45	1.18
	38	0.99
	32	0.84
	29	0.76
	26	0.68
	26	0.68
	25	0.65
	22	0.58
	19	0.50
	18	0.47
	17	0.44
	16	0.42
	14	0.37
	8	0.21
	5	0.13
	<b>3826</b>	<b>100.00</b>

**1-1-3 2017**

		%
	592	15.47
	439	11.47
	415	10.85
	253	6.61
	189	4.94
	177	4.63
	168	4.39
	168	4.39
	154	4.03
	144	3.76
	107	2.80
	98	2.56
	94	2.46
	94	2.46
	91	2.38
	69	1.80
	<b>3252</b>	<b>85.00</b>

**1-1-4 2017**

-

		%
	22	31.88
	11	15.94
	7	10.14
	6	8.70
	5	7.25
	4	5.80
	3	4.35
	3	4.35
	3	4.35
	2	2.90
	2	2.90
	1	1.45
	<b>69</b>	<b>100.00</b>

2017 96.20% 96.16%  
 98.56% 1-2-1 1-2-2

1-2-1 2017

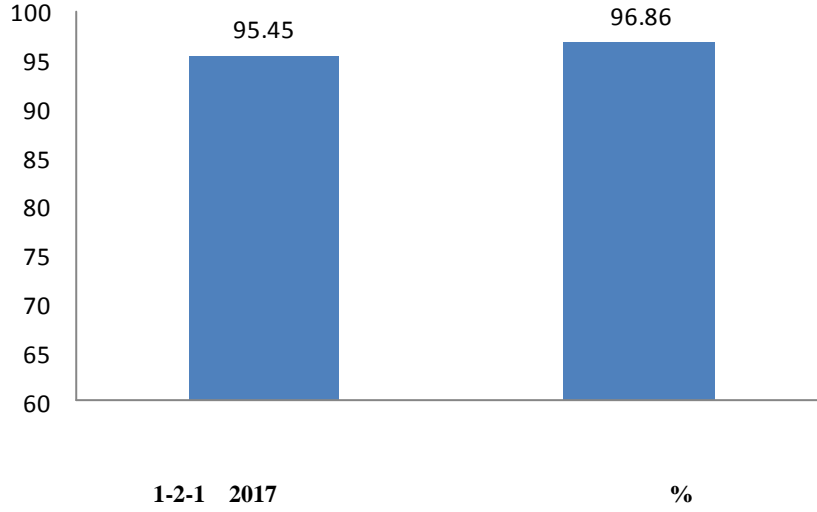
			%
	/ /	3203	83.71
		456	11.92
		16	0.42
		4	0.10
		<b>3679</b>	<b>96.16</b>
		147	3.84
		<b>147</b>	<b>3.84</b>

1-2-2 2017

			%
		61	88.41
		7	10.15
		<b>68</b>	<b>98.56</b>
		1	1.45
		<b>1</b>	<b>1.45</b>

) = / / ×100% = - / ( ×100%

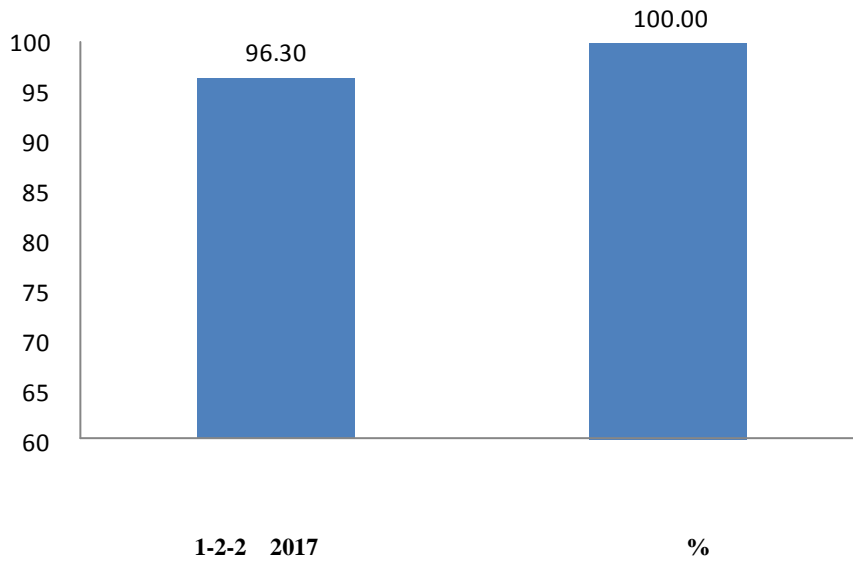
1-2-1                      95.45%   96.86%                      1.41  
    96.77%   100.00%                      3.23



1-2-3                      2017    10  
   96.20%    1-2-2    2017

1-2-3 2017

	%		%
	100.00		96.78
	98.69		96.45
	98.68		96.30
	97.69		94.87
	97.27		93.78
	96.93		92.53
	96.90		88.52
		<b>96.16</b>	



2017  
100.00% 37

16  
96.20%

1-2-4

1-2-4 2017

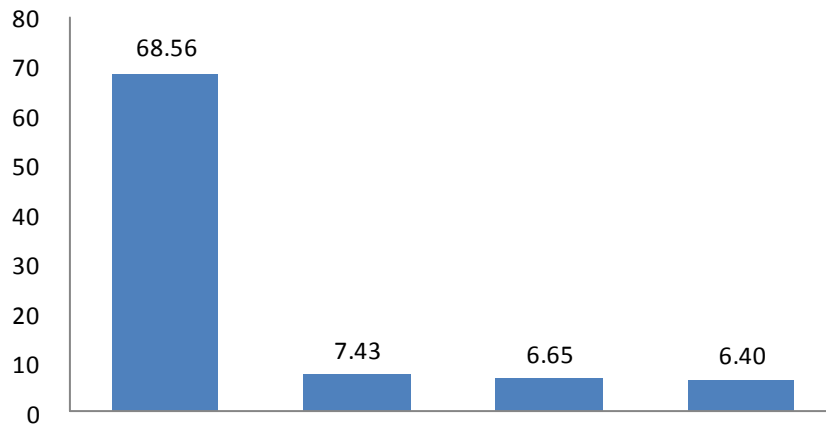
	%		%
	100.00		97.50
	100.00		97.50
	100.00		97.06
	100.00		97.04
	100.00		96.97
	100.00		96.92
	100.00		96.88
	100.00		96.30
	100.00		96.10
	100.00		95.92
	100.00		95.88
	100.00		95.56
	100.00		95.37
	98.86		95.00
	98.81		94.62
	98.63		94.32
	98.59		94.29

	%		%
	98.41		93.88
	98.00		93.88
	97.96		93.18
	97.87		92.73
	97.80		92.47
	97.70		91.67
	97.67		91.30
	97.56		
		<b>96.20</b>	

2017 / /  
 3203 83.80% 83.72% 88.41%

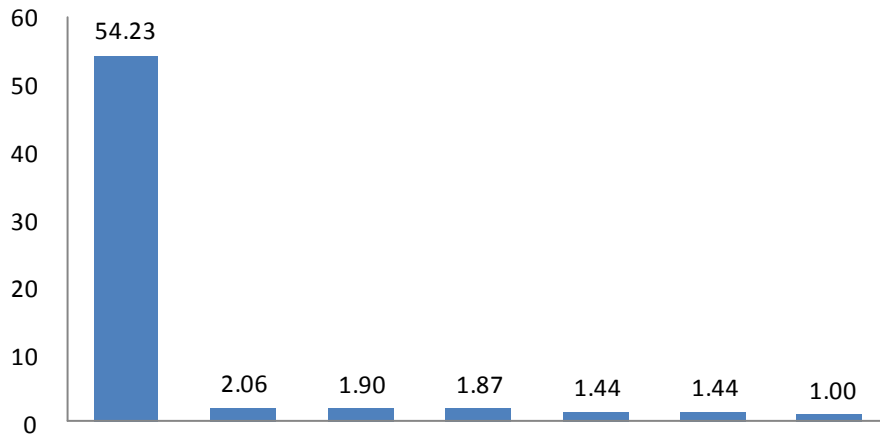
**1.**

2017  
 68.56% 1-3-1  
 2017 54.23% 1-3-2



1-3-1 2017 - %

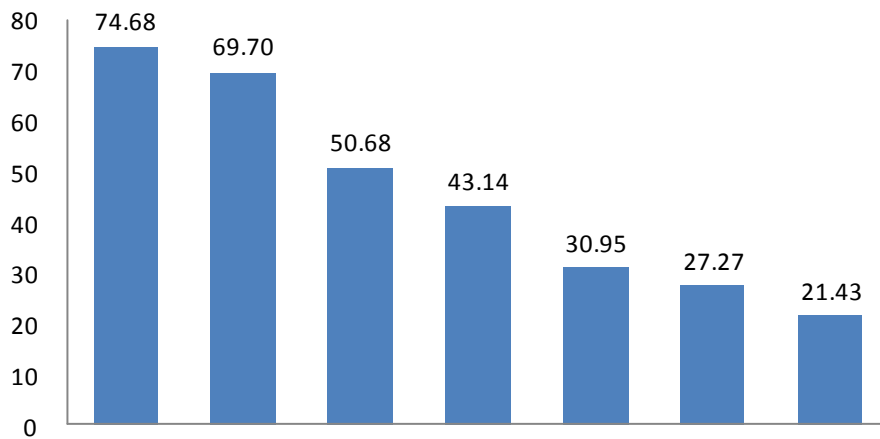
/ /



1-3-2 2017 - %

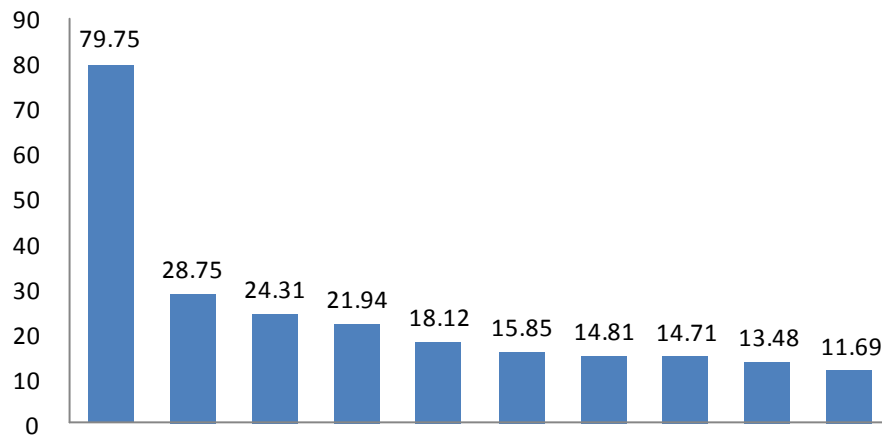
2.

2017 69.18%  
68.97% 80.33%  
74.68% 80.33%  
50.00% 1-3-3  
79.75% 1-3-4



1-3-3 2017 - %





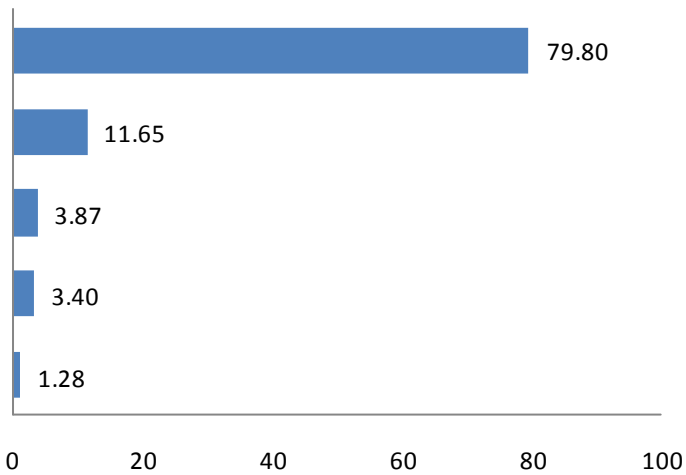
1-3-4 2017 - %

3.

2017

79.80%

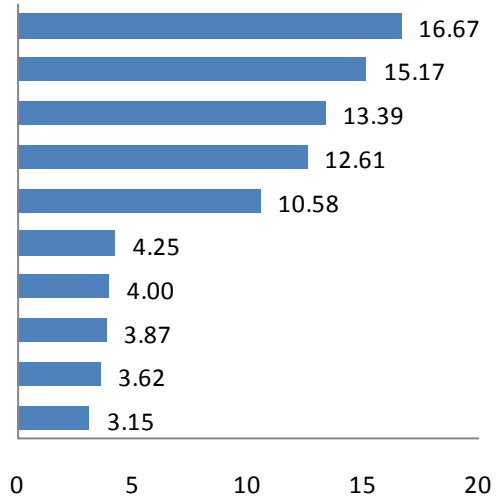
11.65% 1-3-5



1-3-5 2017 %  
0.06 0.12 0.53 0.56

4.

1-3-6 2017  
16.67%  
13.39% 12.61% 15.17%  
10.00%

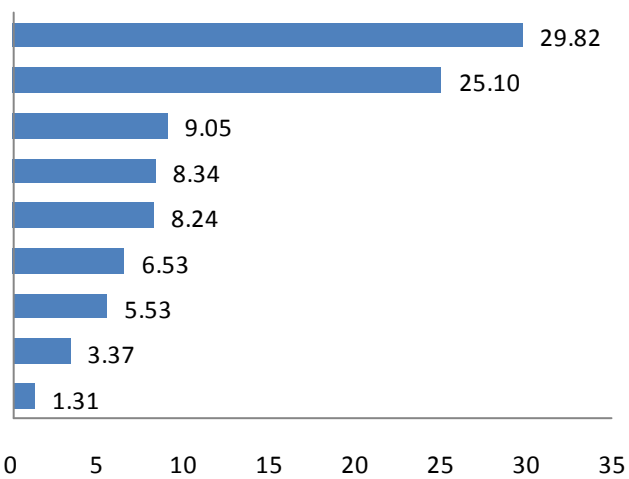


1-3-6 2017

%

5.

2017  
25.10%  
1-3-7



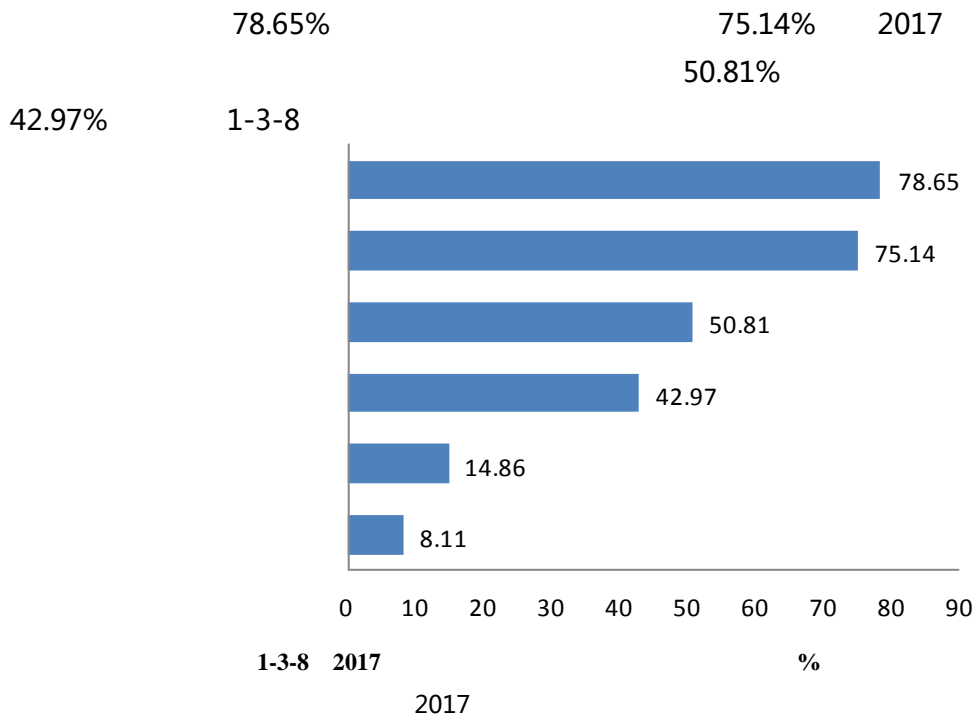
1-3-7 2017

%

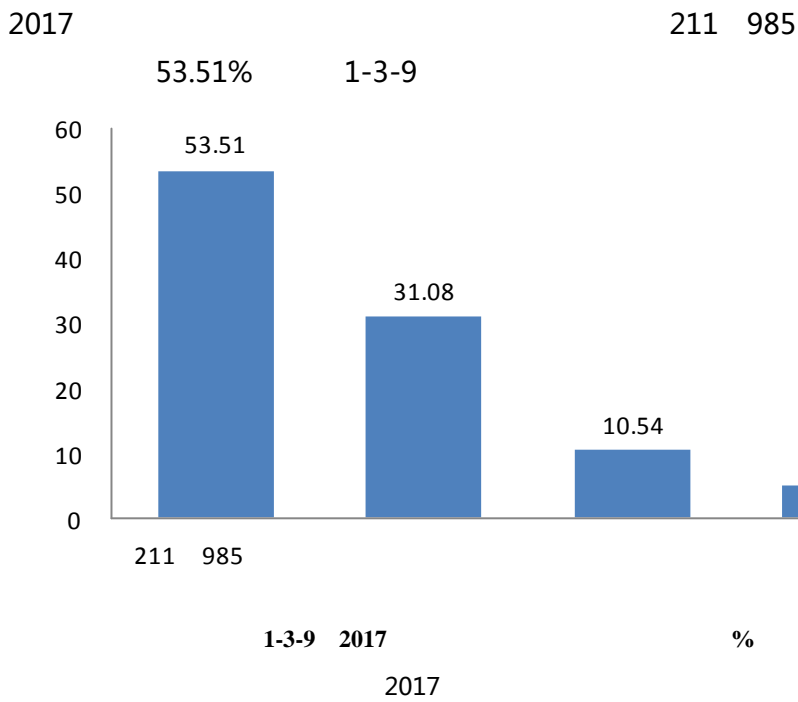
1.

2017 463 456 7  
11.89%

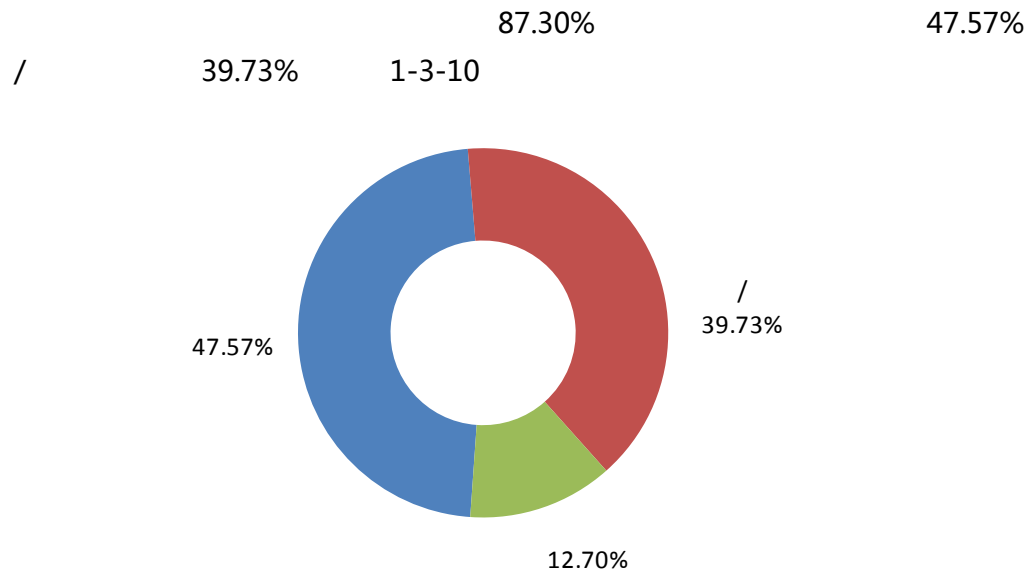
2.



3.



4.



1-3-10 2017

/

2017

1.

2017

2.78%

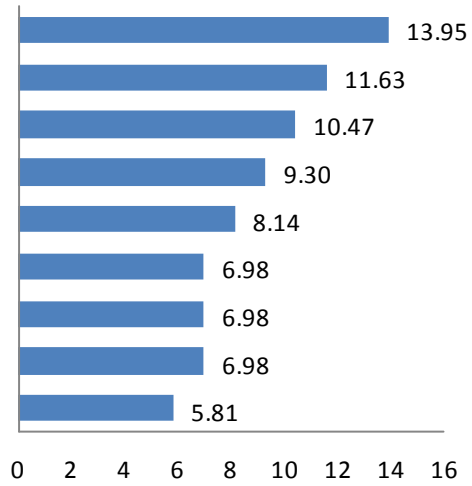
86

85

1

2.

2017 13.95% ,  
11.63% 10.47%  
10.00% 1-3-11



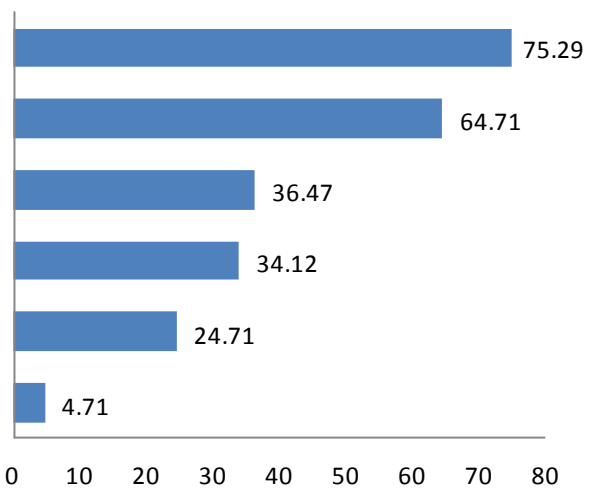
1-3-11 2017

%

2017

3.

2017 75.29%  
64.71% 1-3-12



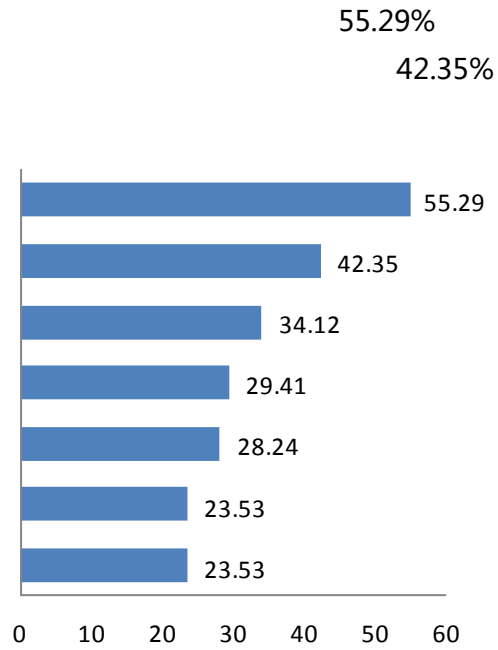
1-3-12 2017

%

2017

4.

1-3-13



1-3-13 2017

%

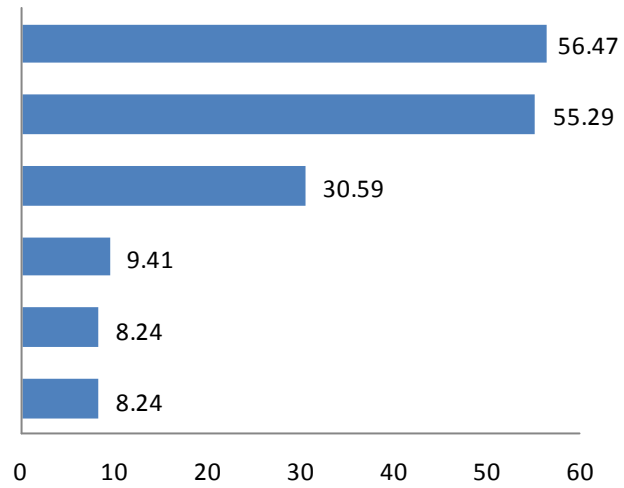
2017

5.

1-3-14

2017  
55.29%

56.47%  
30.59%

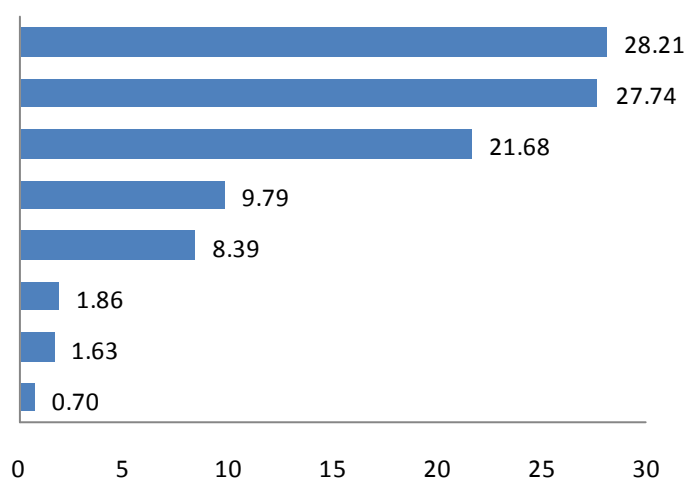


1-3-14 2017

%

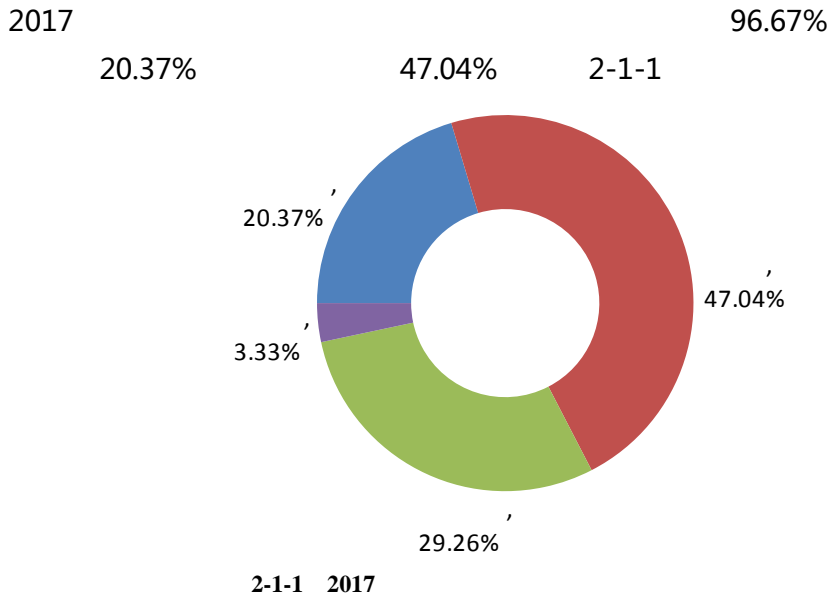
2017

2017		148	147	1
	3.80%	3.84%	1.45%	

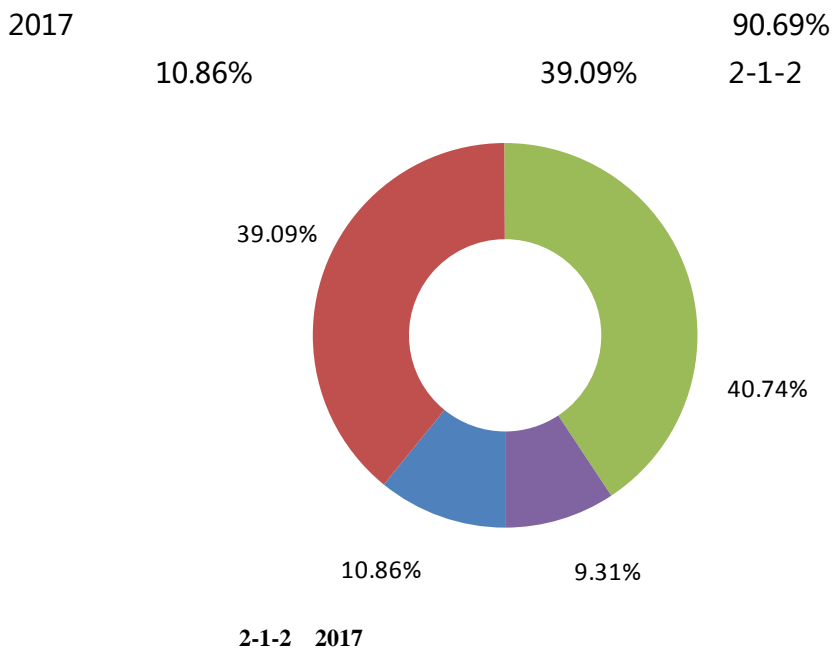


/

1.



2.



2017



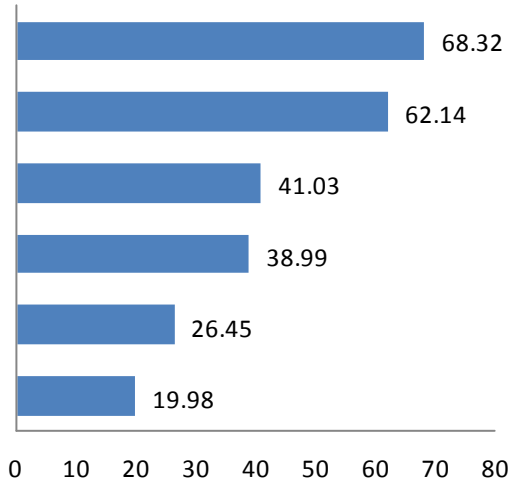
3.

2017

68.32%

62.14%

2-1-3



2-1-3 2017

%

2017

1.

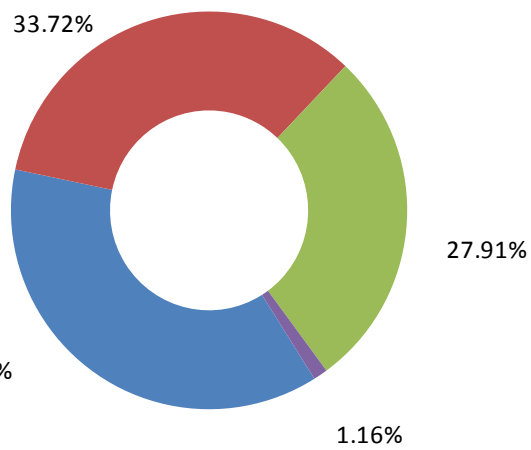
2017

98.84%

37.21%

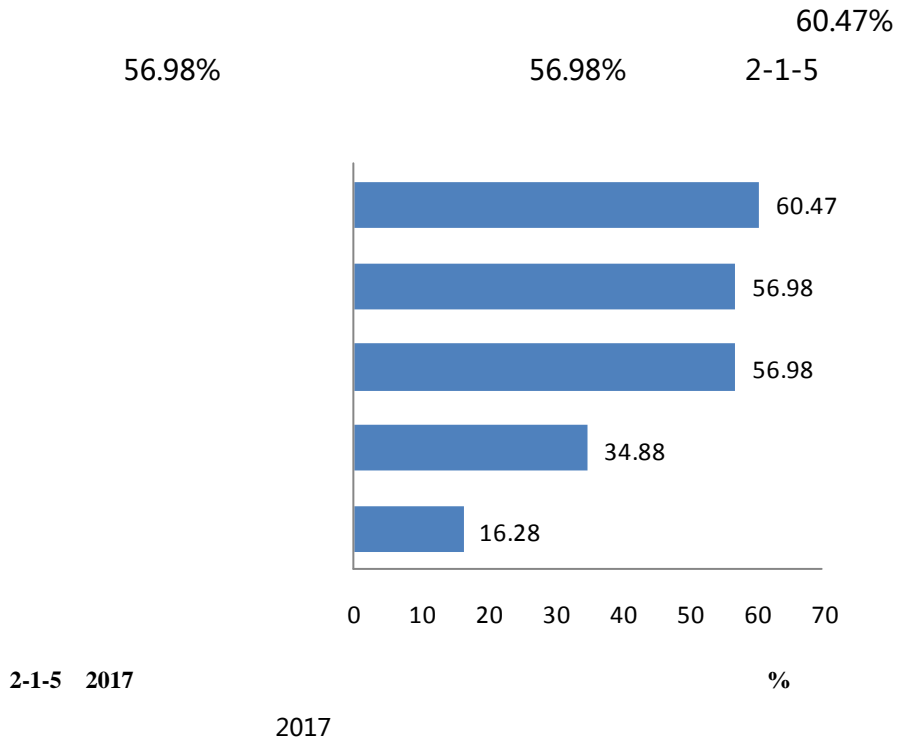
33.72%

2-1-4



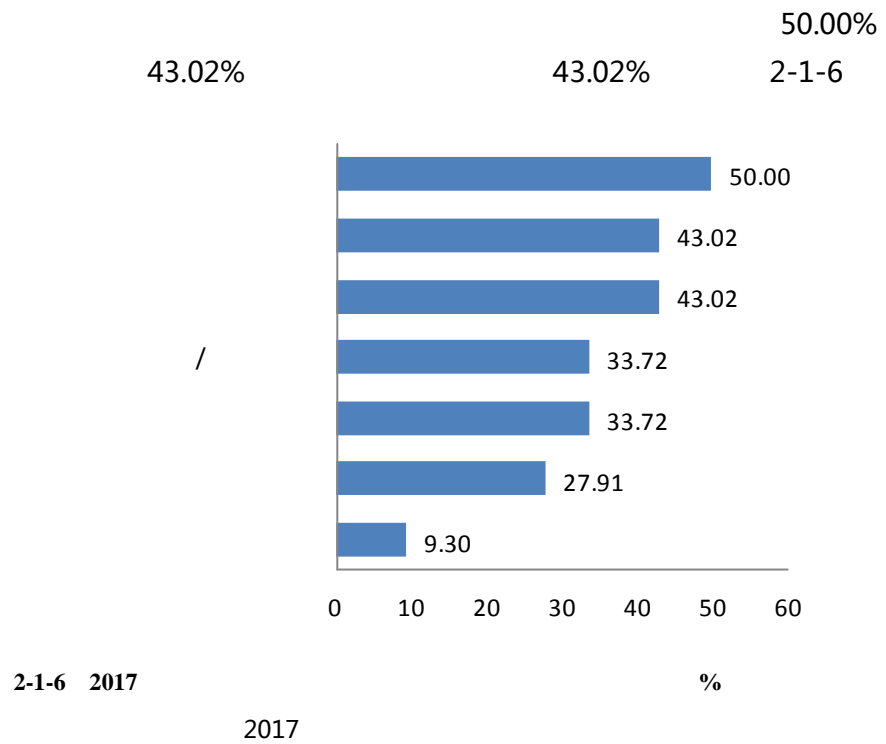
2-1-4 2017

2017



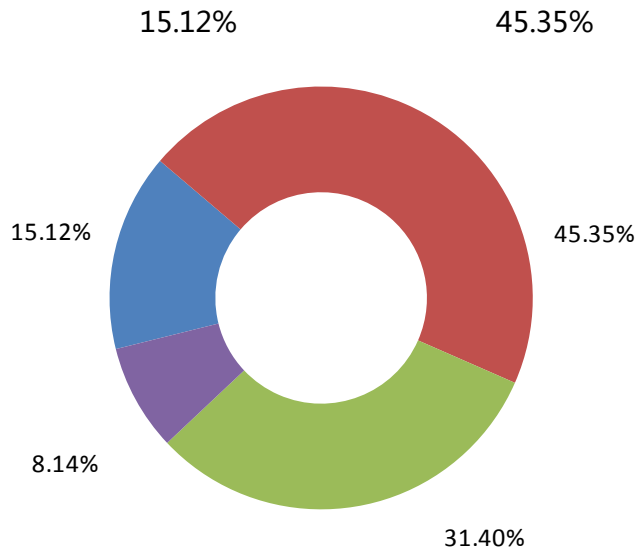
2.

2017



3.

2-1-7 2017 60.46%

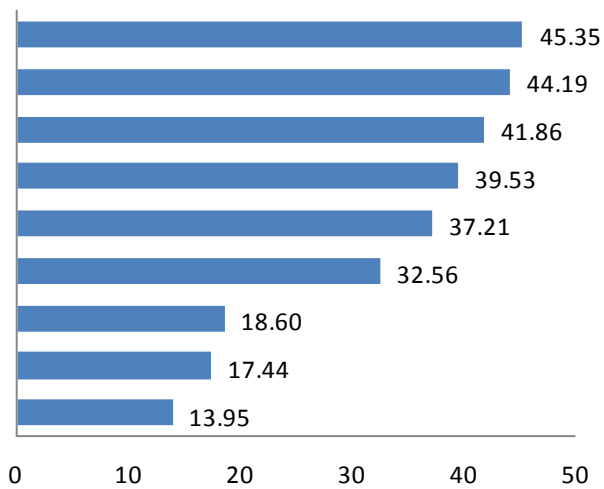


2-1-7 2017

2017

4.

45.35% 44.19% 41.86%  
2-1-8

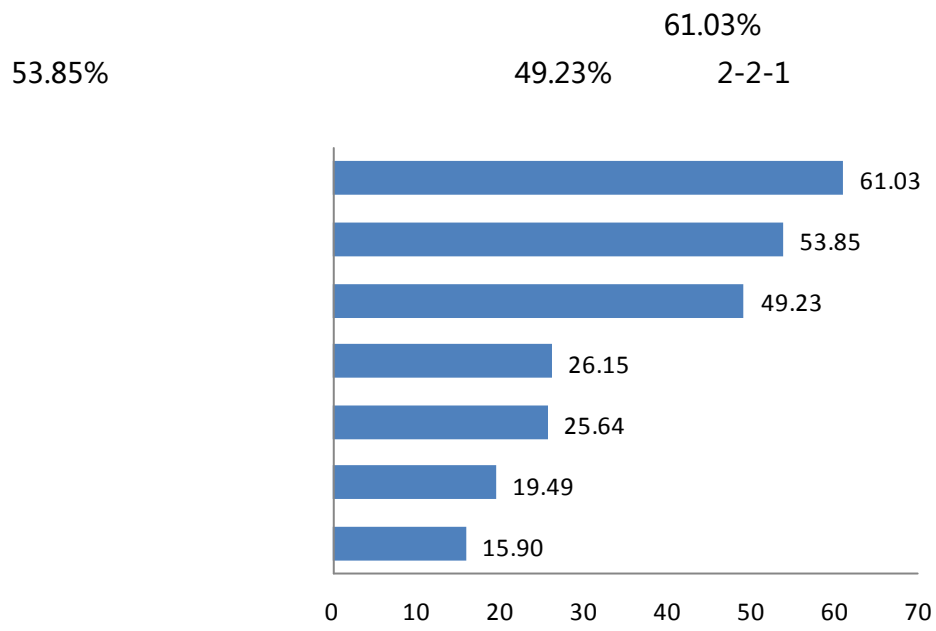


2-1-8 2017

%

2017

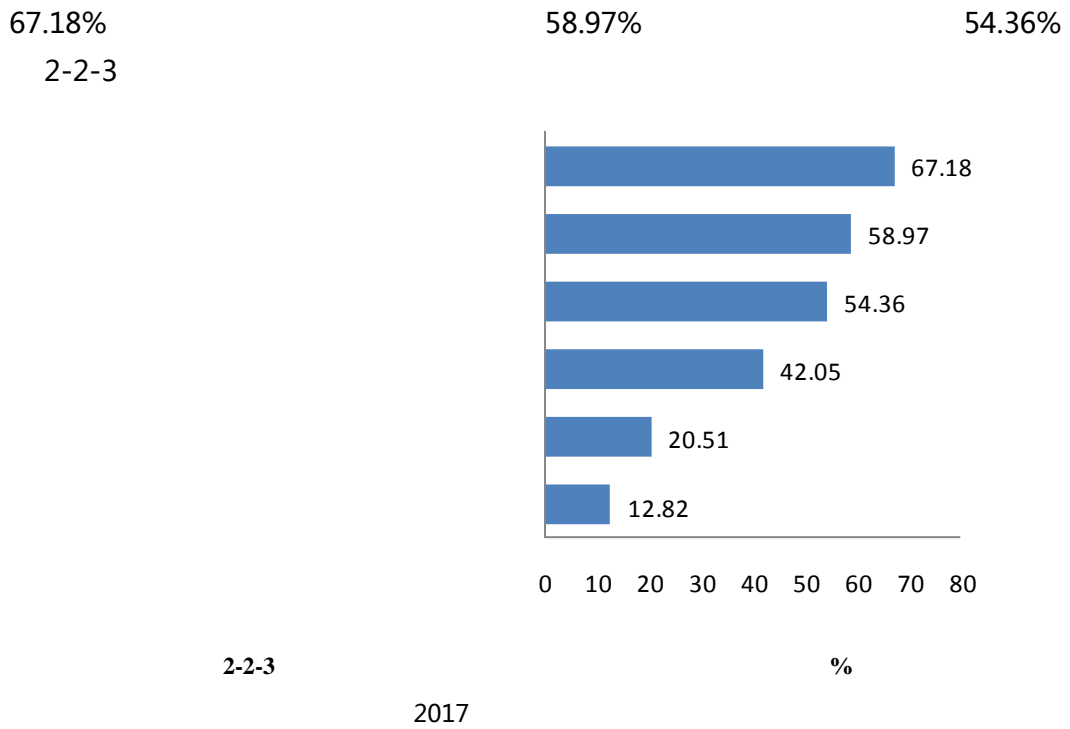
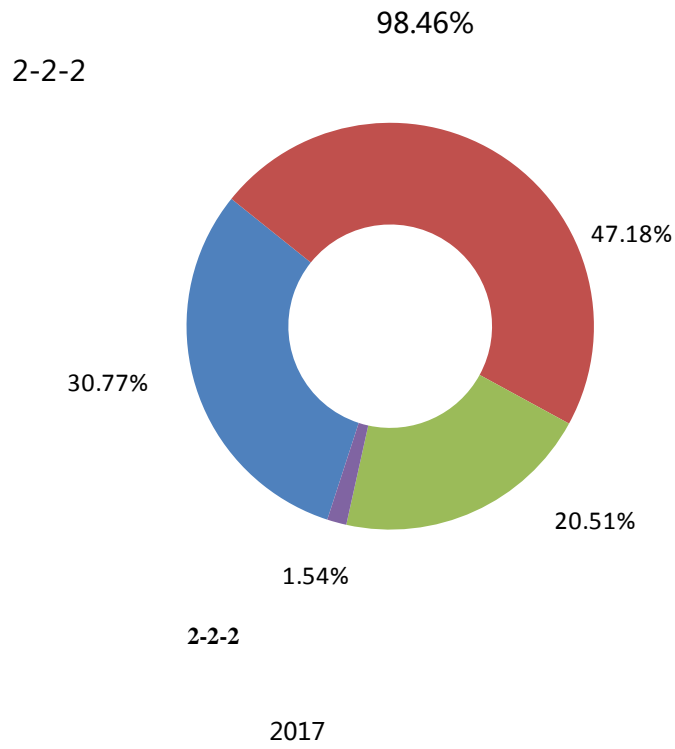
51 195 45.13%  
25.64% 86.15% 15.90% 8.72%

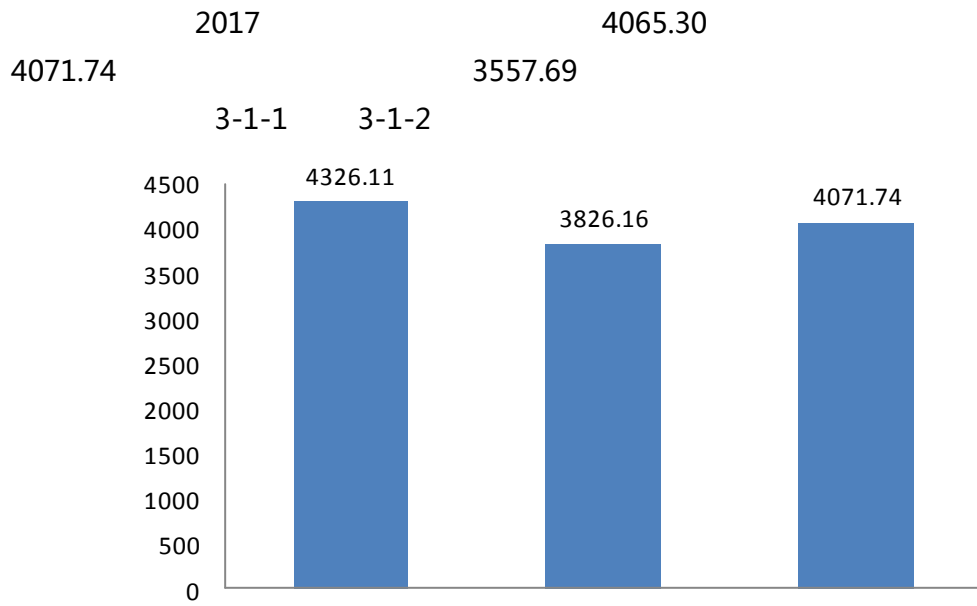


2-2-1

%

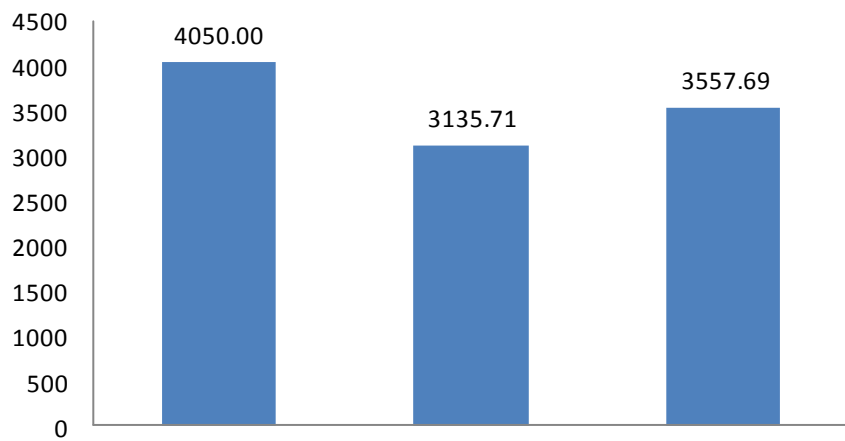
2017





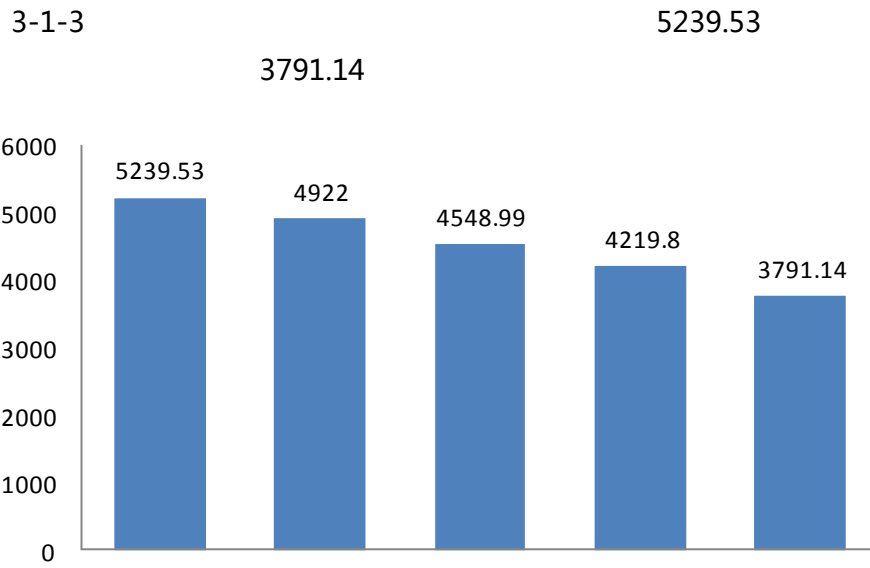
**3-1-1 2017**

2017



**3-1-2 2017**

2017



3-1-3 2017

-

2017

1.

3-1-1

4599.05

3466.67

3-1-1 2017

	4599.05		4111.12
	4532.50		3855.45
	4505.66		3776.81
	4345.40		3638.04
	4277.15		3605.88
	4266.03		3582.42
	4209.09		3534.52
	4156.28		3466.67
		<b>4065.30</b>	

2017

2.

5075.00

4955.37

3270.27

3-1-2

3-1-2 2017

4-й квартал 2017

	5075.00		3960.38
	4955.37		3845.61
	4747.56		3801.47
	4721.27		3780.49
	4691.43		3751.25
	4675.00		3715.69
	4499.76		3708.99
	4478.33		3602.59

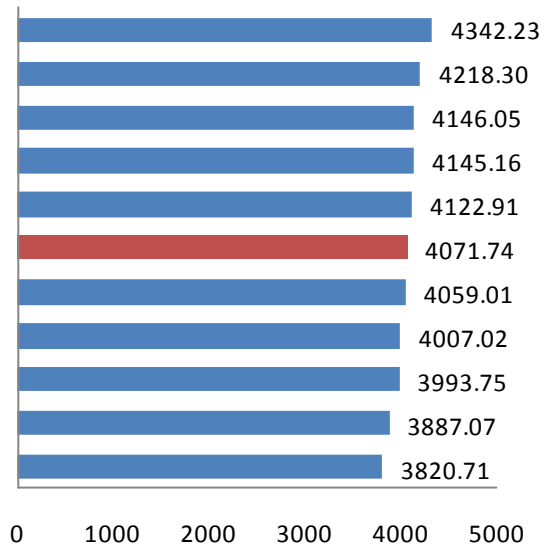


1.

3-1-4

4342.23

4218.30



3-1-4 2017

2017

2.

4731.73

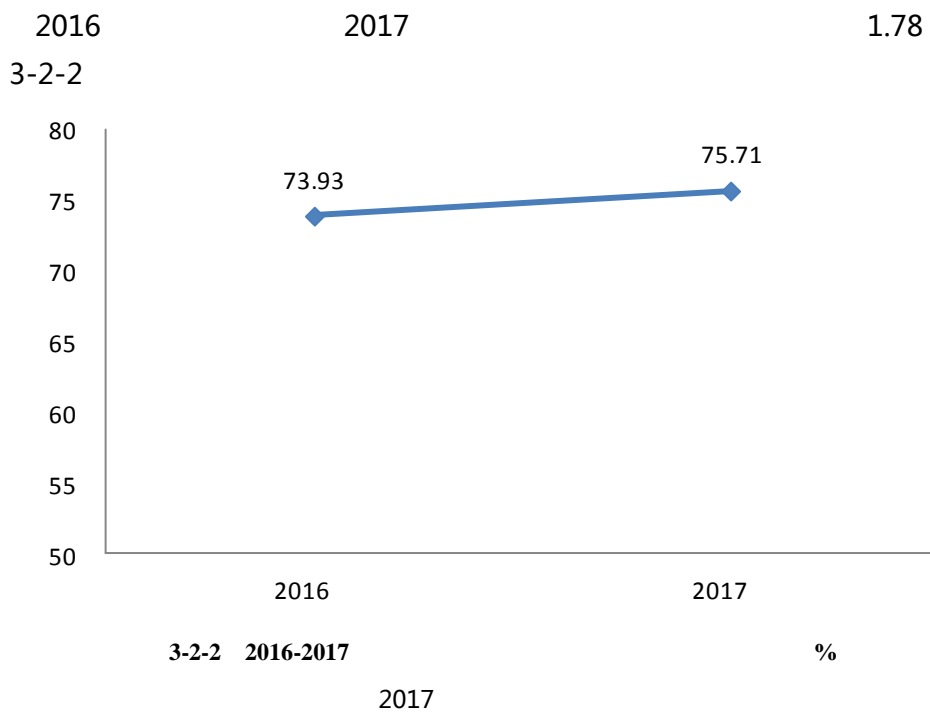
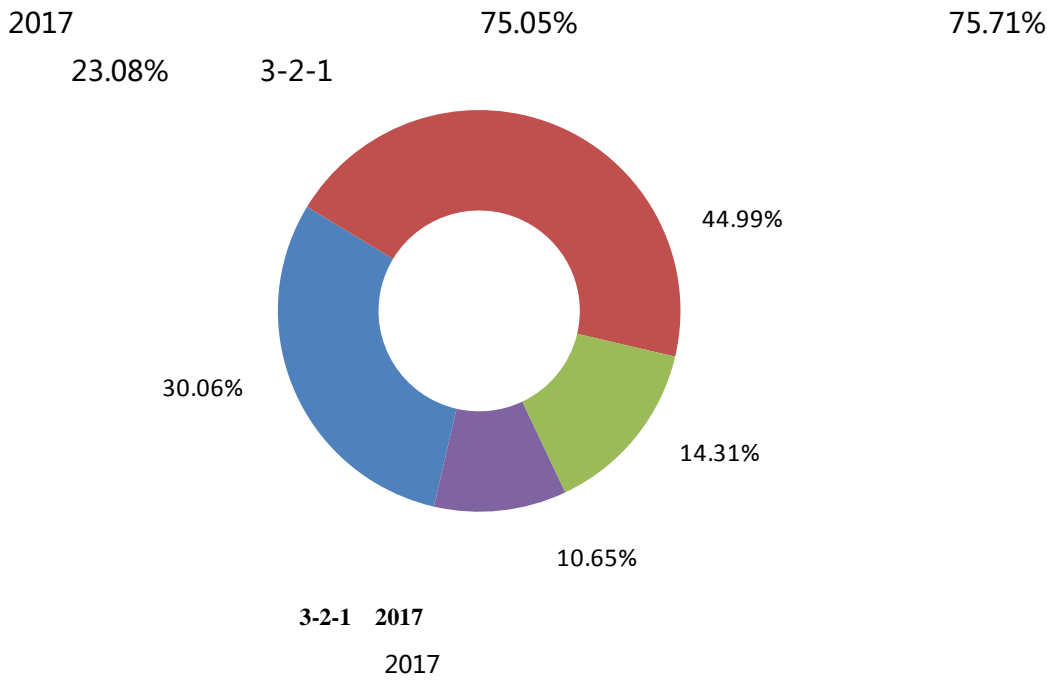
4374.65

3-1-3

3-1-3 2017

	4731.73		3940.16
	4374.65		3894.00
	4028.25	/	3707.69
	4027.71		3676.24
	4013.15		3482.81
	3957.04		<b>4071.74</b>

2017



1.

92.17%

43.55%

3-2-1

3-2-1 2017

			%
	92.17		77.92
	90.00		77.39
	88.80		76.19
	85.29		70.71
	84.46		57.45
	79.89		56.63
	78.13		43.55
		<b>75.71</b>	

2017

2.

94.87%

90.00%

3-2-2

3-2-2 2017

			%
	94.87		77.36
	93.90		75.86
	93.18		73.77
	91.89		73.75
	89.81		72.97
	88.42		72.88
	87.64		65.71
	86.67		65.22
	86.36		60.98

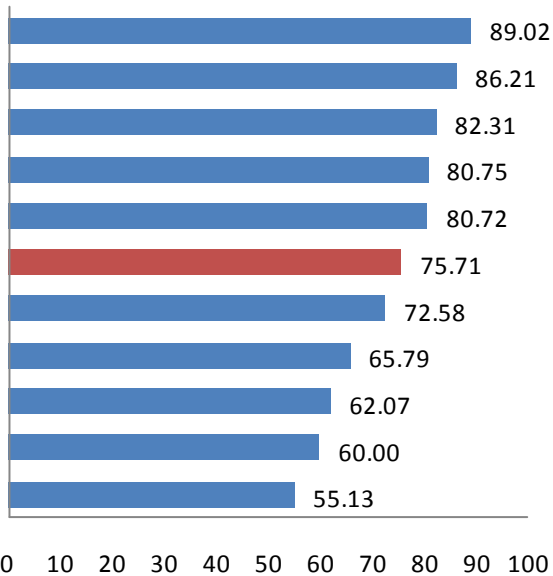
	86.21		57.38
	85.71		54.39
	83.13		52.38
	80.70		45.71
	78.95		44.62
	75.71		

2017

1.

13.31  
3-2-3

86.21%      82.31%      80.75  
80.72%      89.02%      80.00%



3-2-3 2017

%

2017

2.

3-2-3  
 86.61%                      10.90                      /                      41.15%  
    34.56

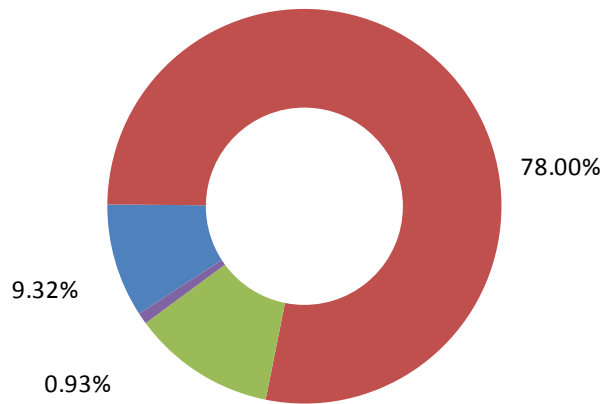
3-2-3 2017

			%
	86.61		76.25
	82.93		65.73
	82.93		65.73
	80.36		60.98
	80.36	/	41.15
	78.00		<b>75.71</b>

2017

1.

2017                      87.38%                      87.32%  
 92.31%                      3-3-1

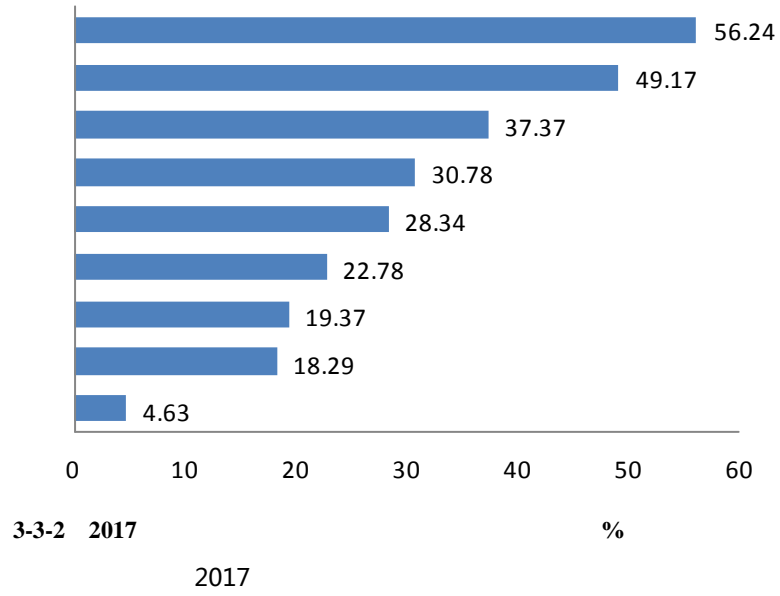


3-3-1 2017

2017

2.

56.24% 2017  
49.17% 3-3-2



1.

97.50% 10.18  
90.00%  
74.75% 3-3-1  
3-3-1 2017

			%
	97.50		87.20
	92.46		86.81
	92.21		86.77
	89.29		86.27
	89.19		84.94
	88.55		83.87
	87.94		74.75
		87.32	
2017			

2.

2017

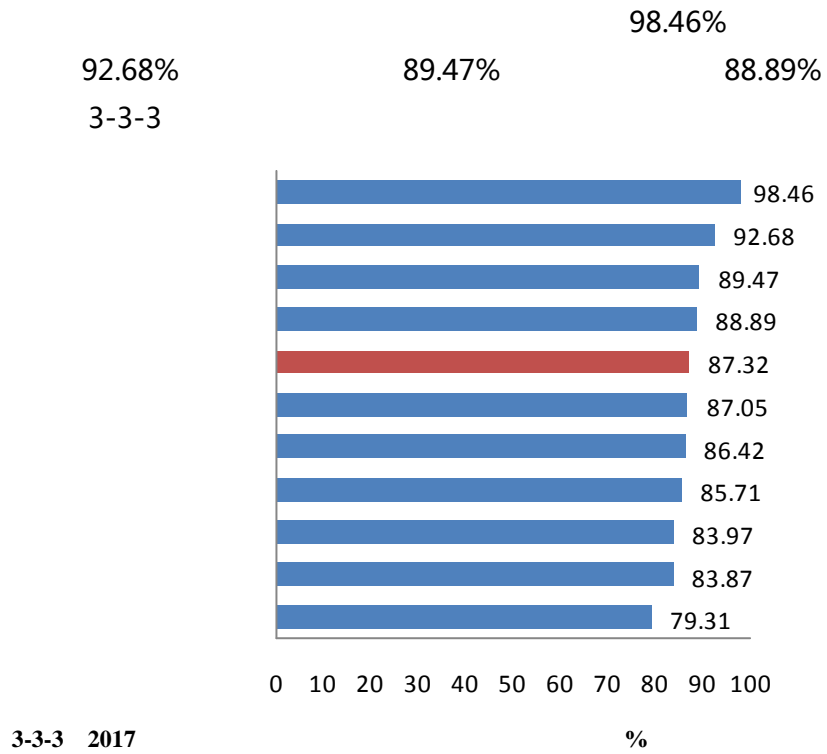
98.36% 94.74% 93.44%  
74.14% 3-3-2

3-3-2 2017

			%
	98.36		87.80
	94.74		86.36
	93.44		86.21
	92.63		85.71
	92.50		85.71
	91.67		84.21
	91.43		83.78
	90.36		83.78
	89.74		83.02
	89.47		81.36
	88.76		78.57
	88.64		78.26
	88.33		75.38
	87.80		74.14
		<b>87.32</b>	

2017

1.



2.

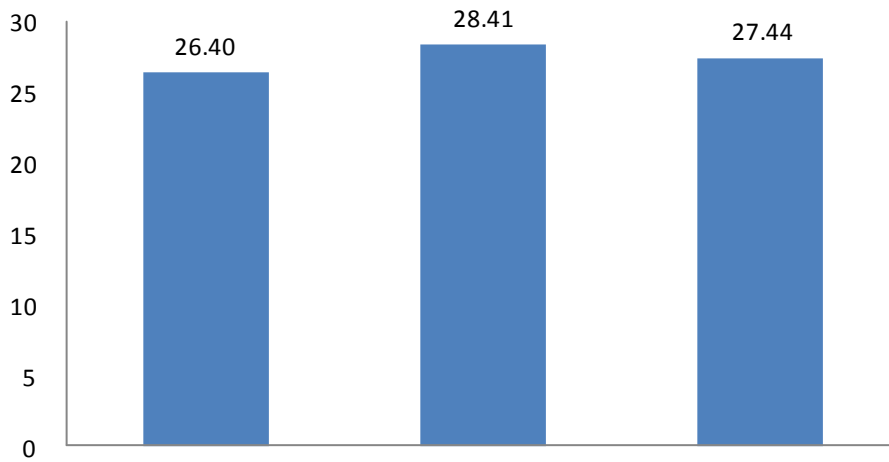
2017

Value	Value	Value	Value
94.40%	96.00%	80.21%	/ / /
3-3-3 2017			
			%
	96.00	/	87.44
	94.40		87.19
	92.68		86.61
	91.07		84.51
	89.38		80.21
	87.80		87.32

2017



2017  
= / +  
26.40% 27.44% 2017 44.12%  
3-4-1 2017 26.41%  
28.41%



3-4-1 2017

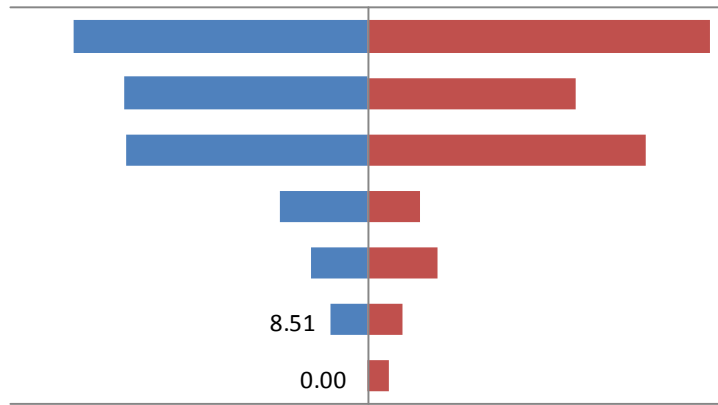
%

2017

11.01

7.81

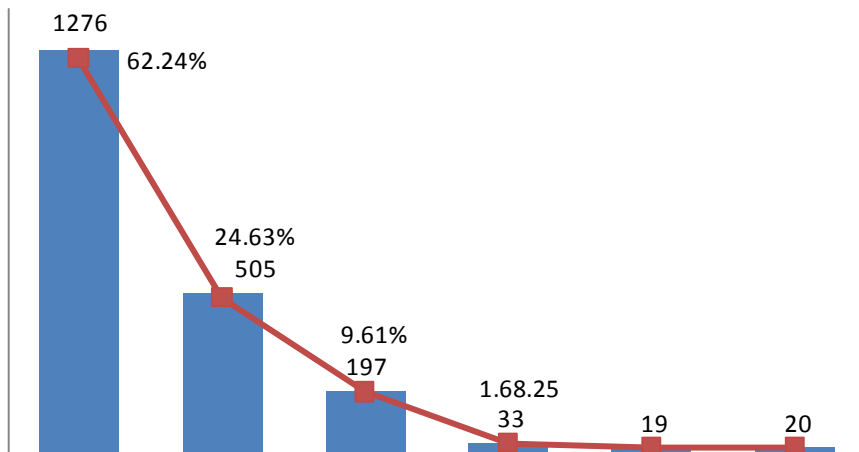
3-4-2



3-4-2 2017 %  
2017

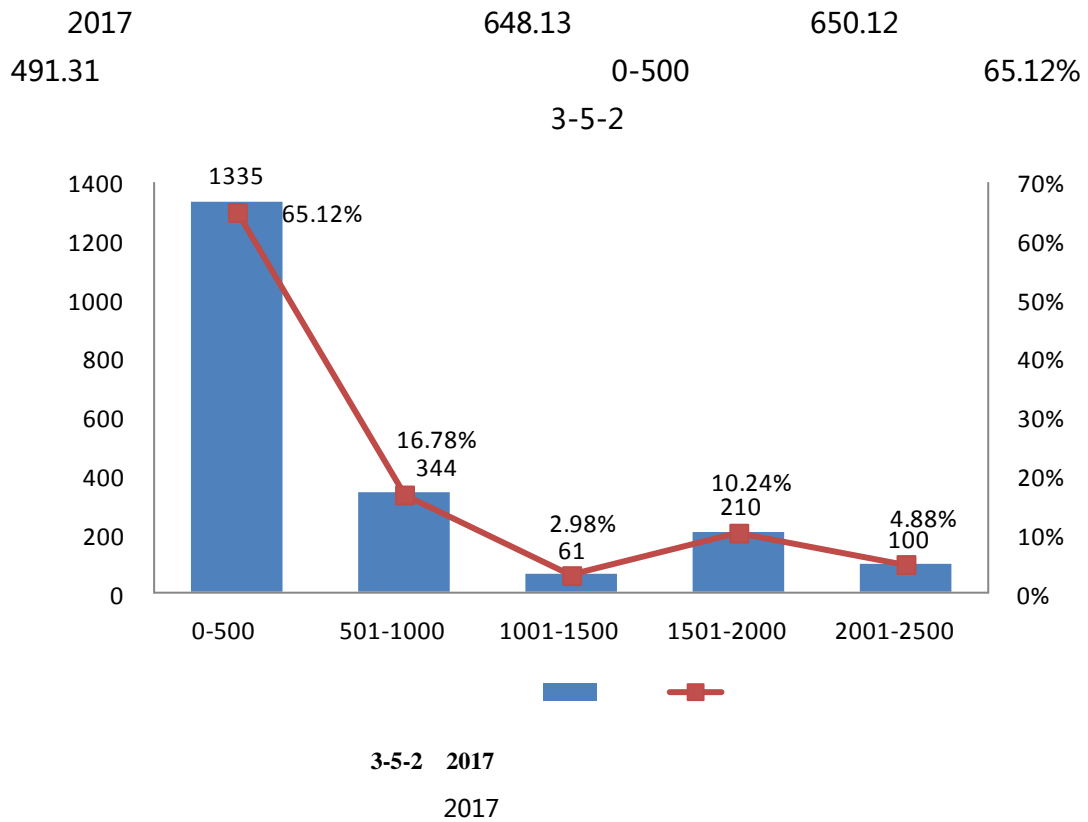
1.

2017 2.50 2.50 2.19  
3-5-1 2017 62.24% 3-5-1 1-2

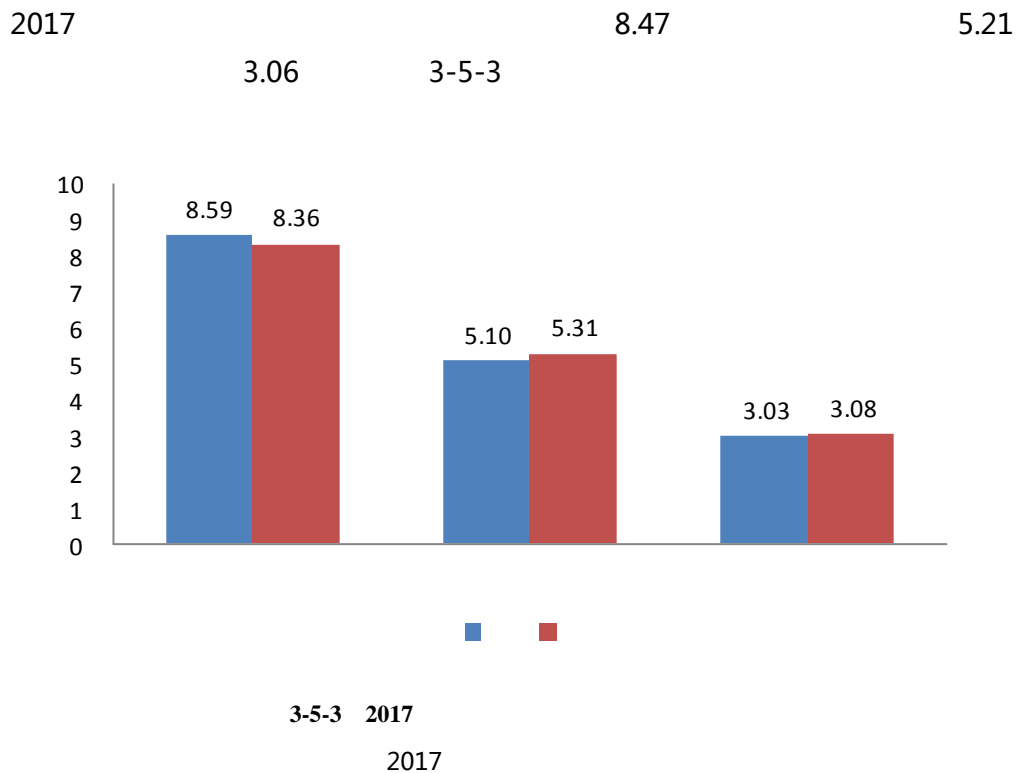


3-5-1 2017  
2017

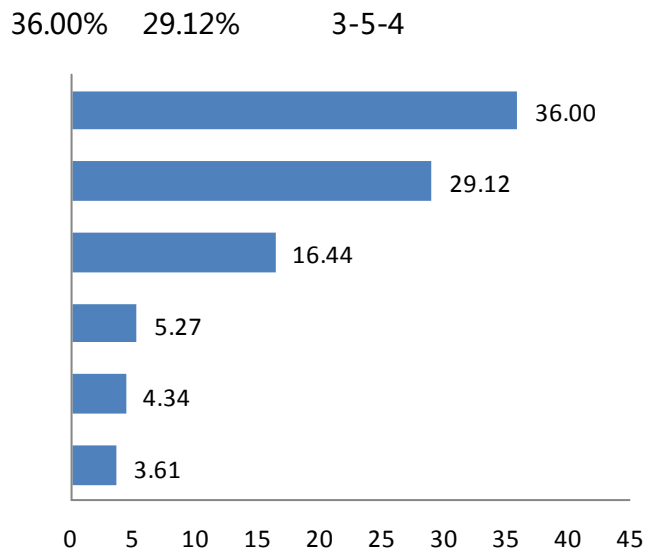
2.



3.



2017

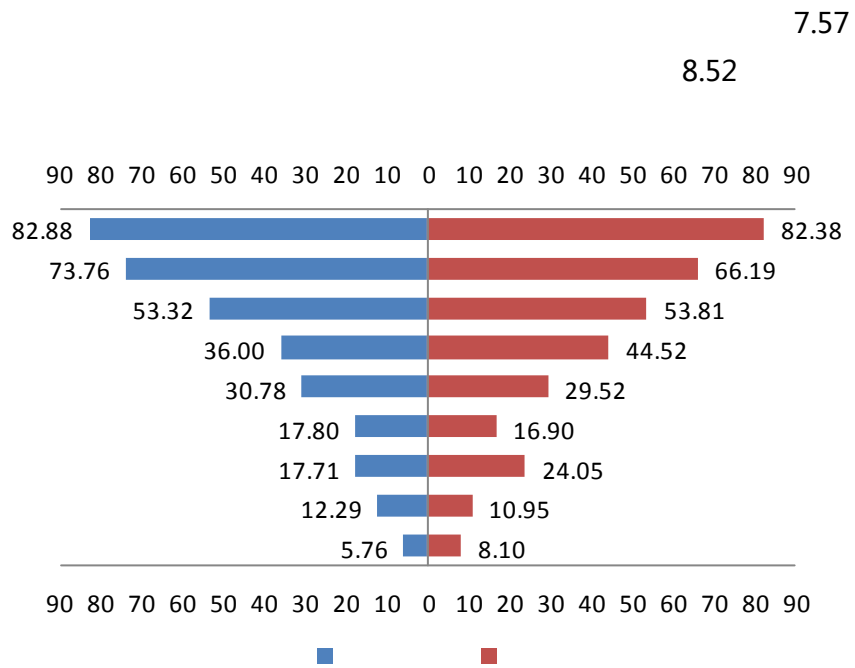


3-5-4 2017

%

2017

3-5-5

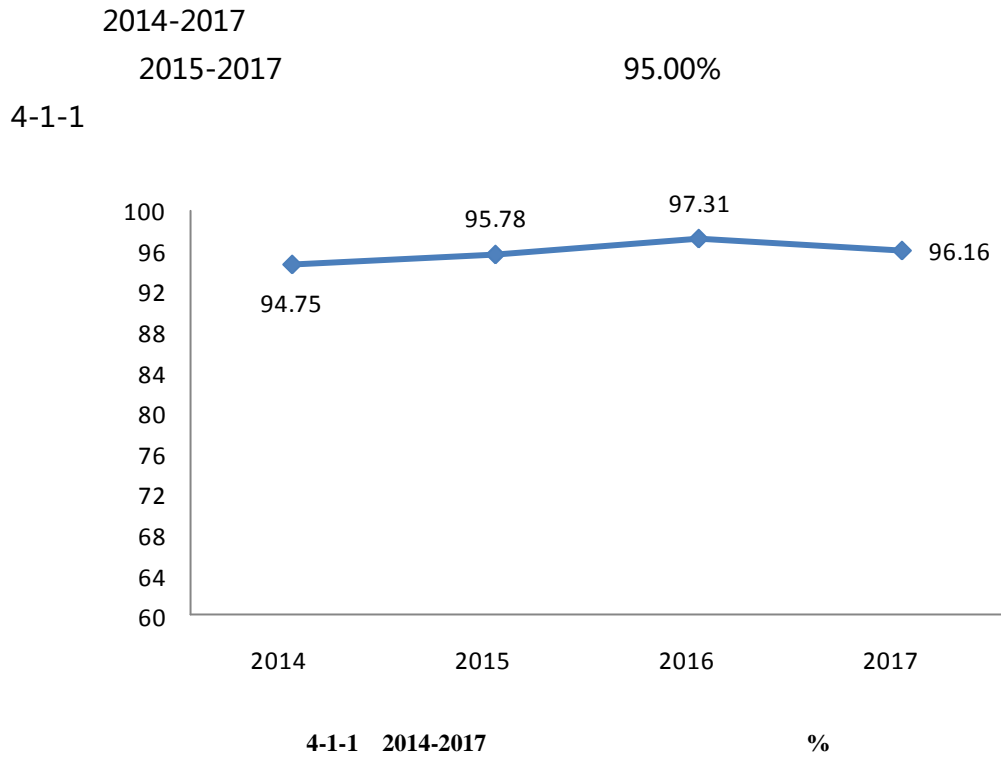


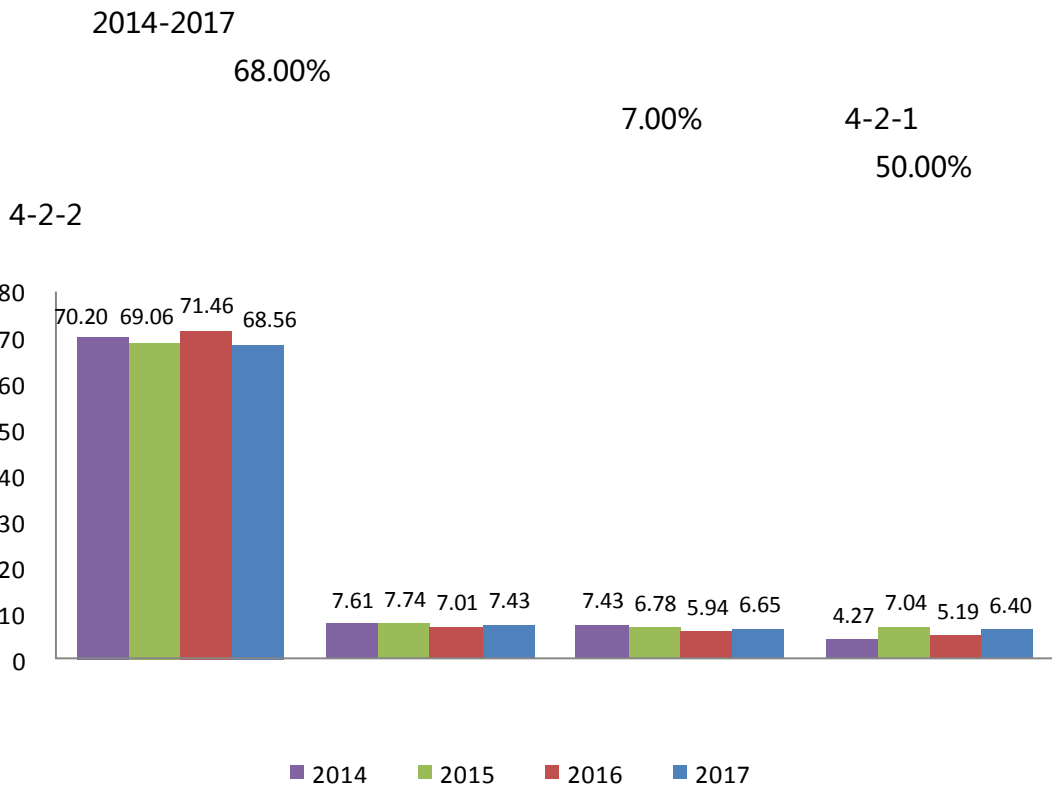
3-5-5 2017

%

2017

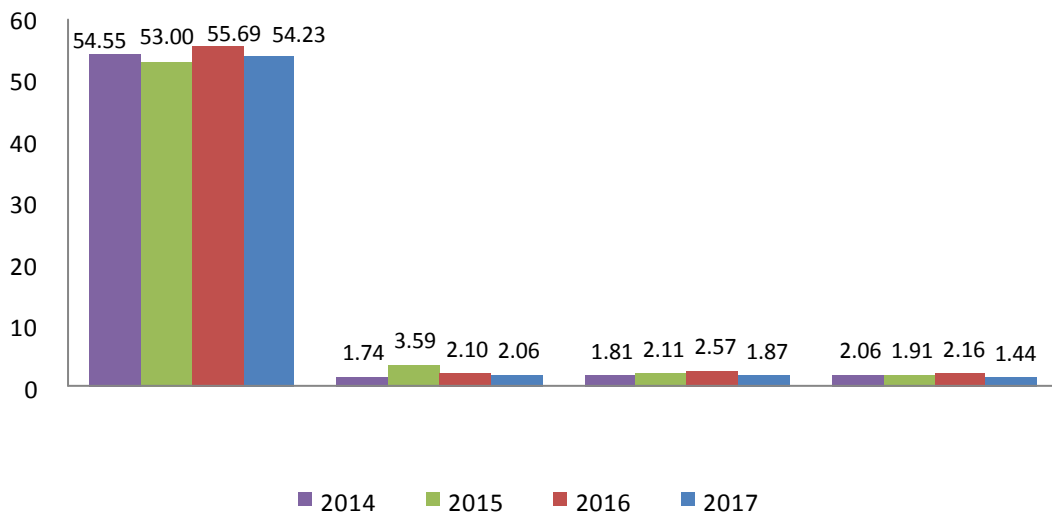






4-2-1 2014-2017

%



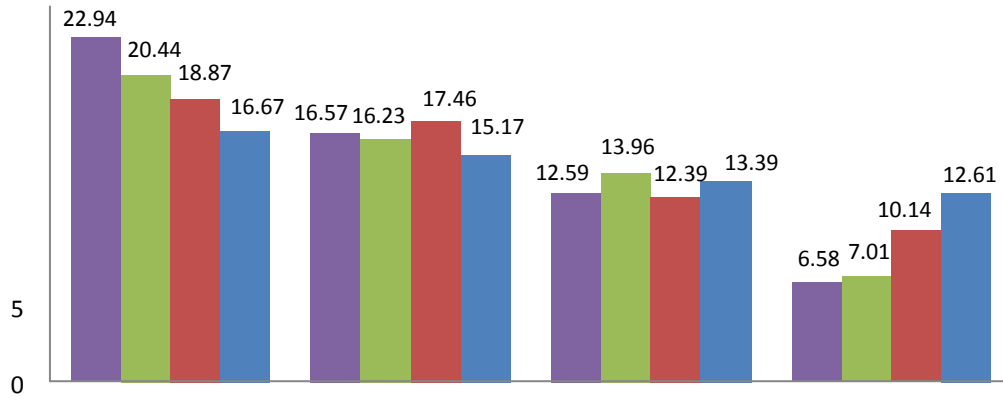
4-2-2 2014-2017

%

4-2-3

12.00%

2014-2017



□

4-2-3 2014-2017

%



2017

2003

2011

6

6-10

12-16

IT

14		2200		800		30
					1800	1.2
	2017	5				

/

2017

2001  
WORKSHOP

WORKSHOP

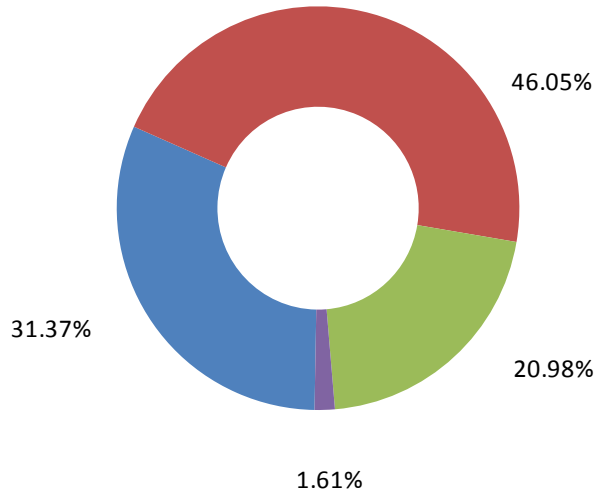
60

14  
LG

				2017
	2000	20	500	
		2	70%	
			2017	2000
		2	60	
86	,		145	2017
	2017		21.28	6.56
			2017	2
2		3	11	20

14

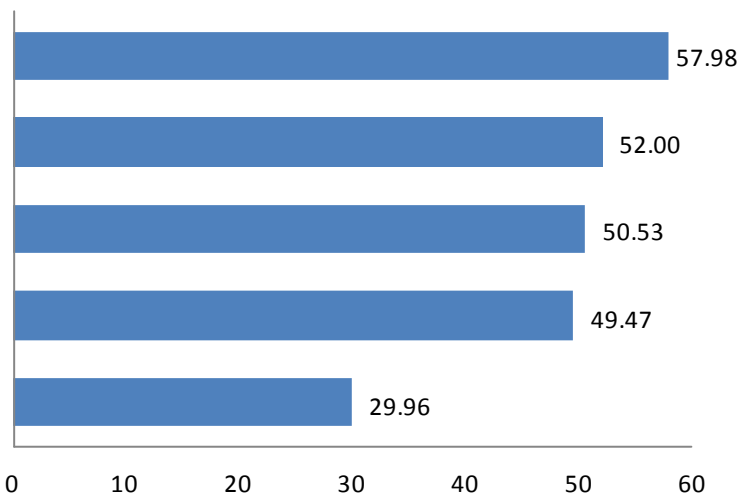
2017 98.39% 100.00% 6-1-1 98.41%



6-1-1 2017

2017

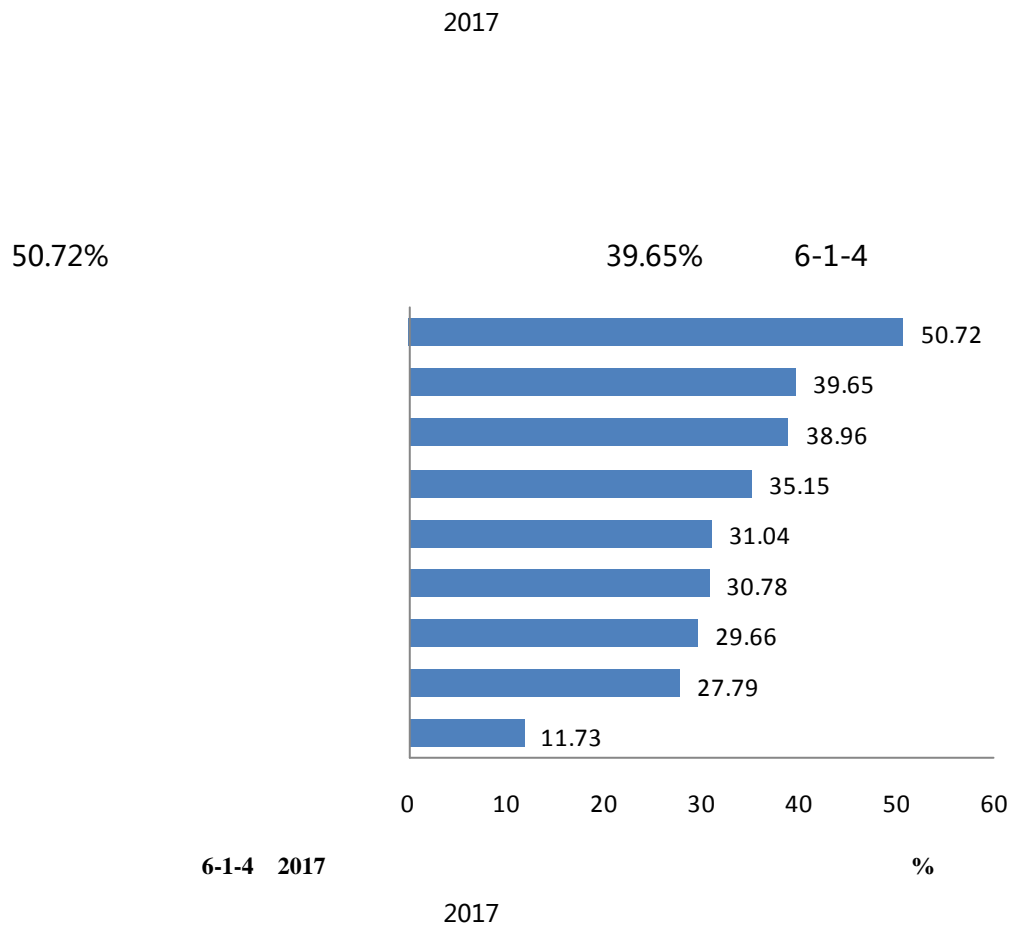
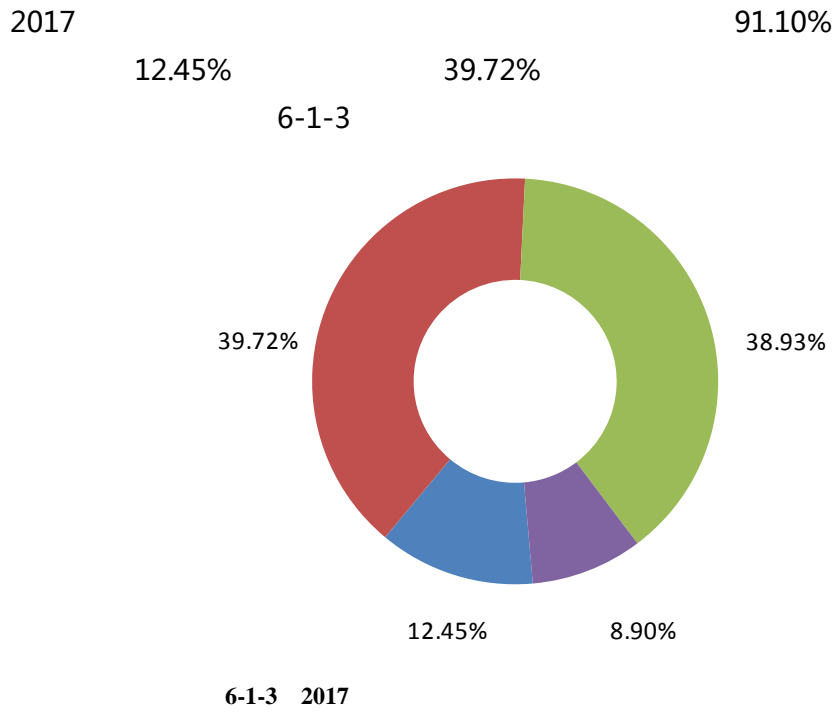
50.00% 6-1-2

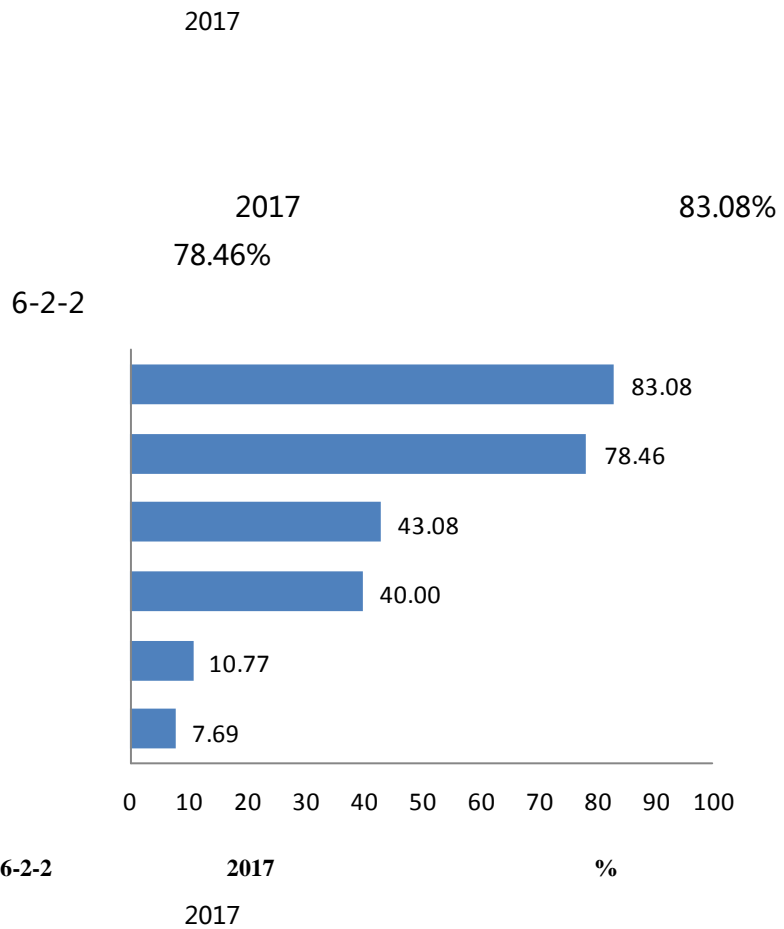
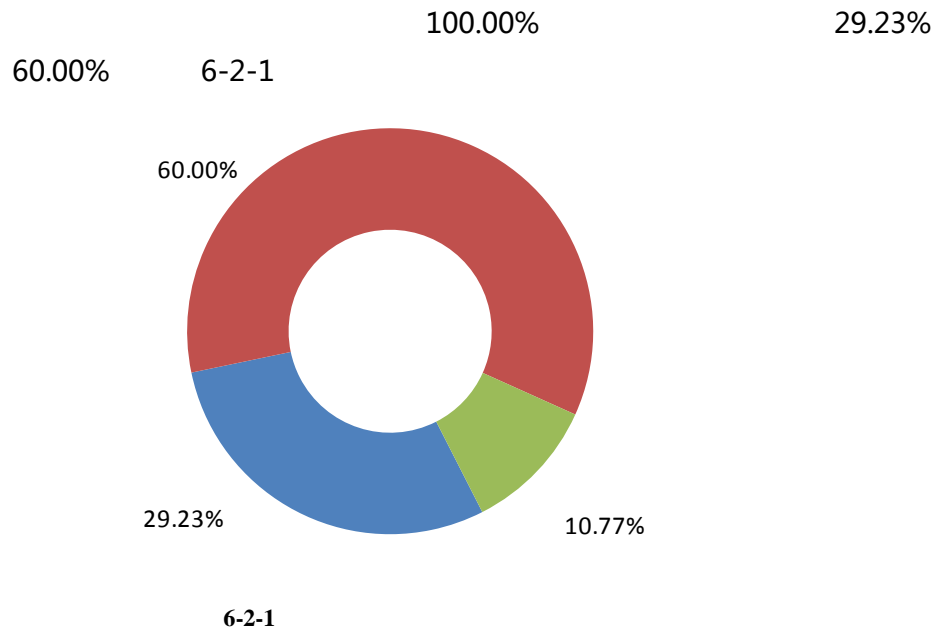


6-1-2 2017

%

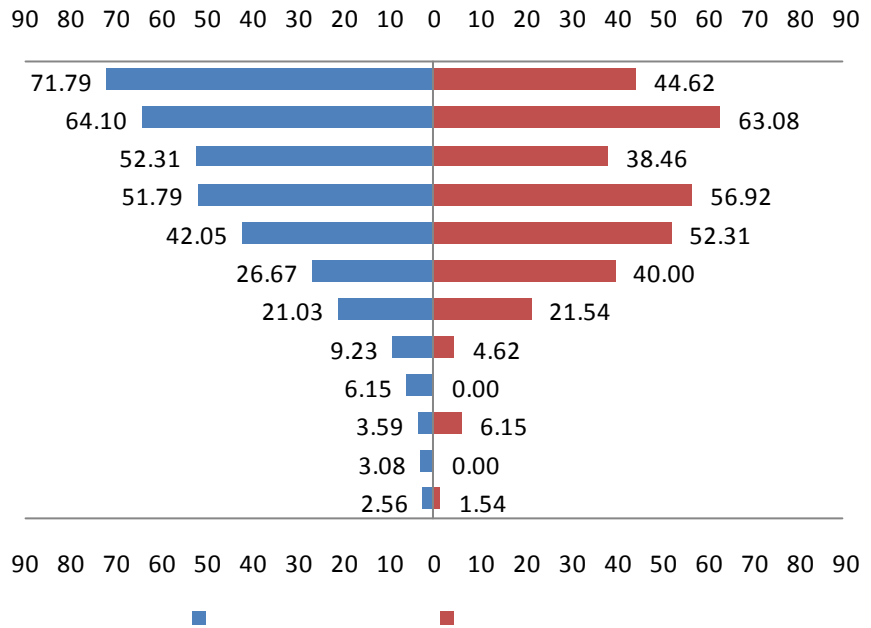
2017





27.17 13.85

6-2-3



6-2-3

%

2017

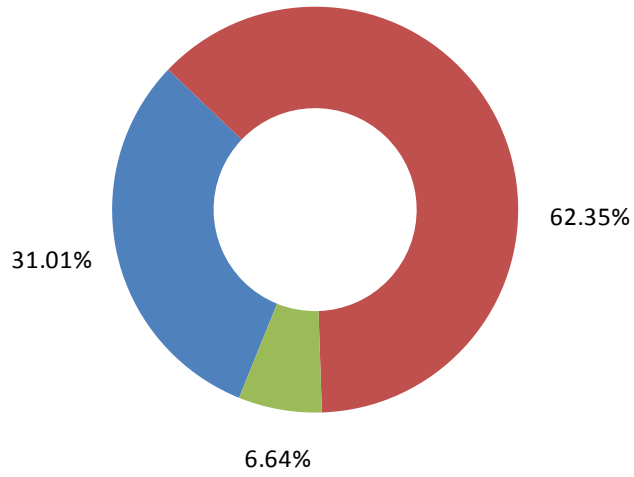


6-3-1 2017

31.01%

62.35%

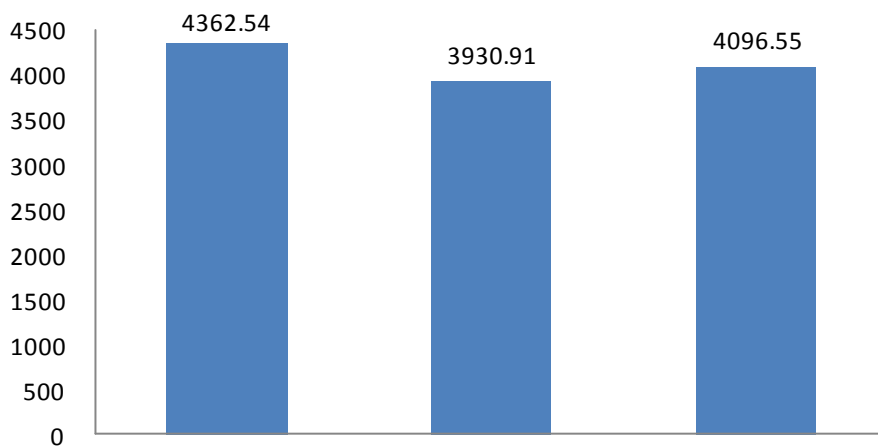
6-3-1



6-3-1 2017

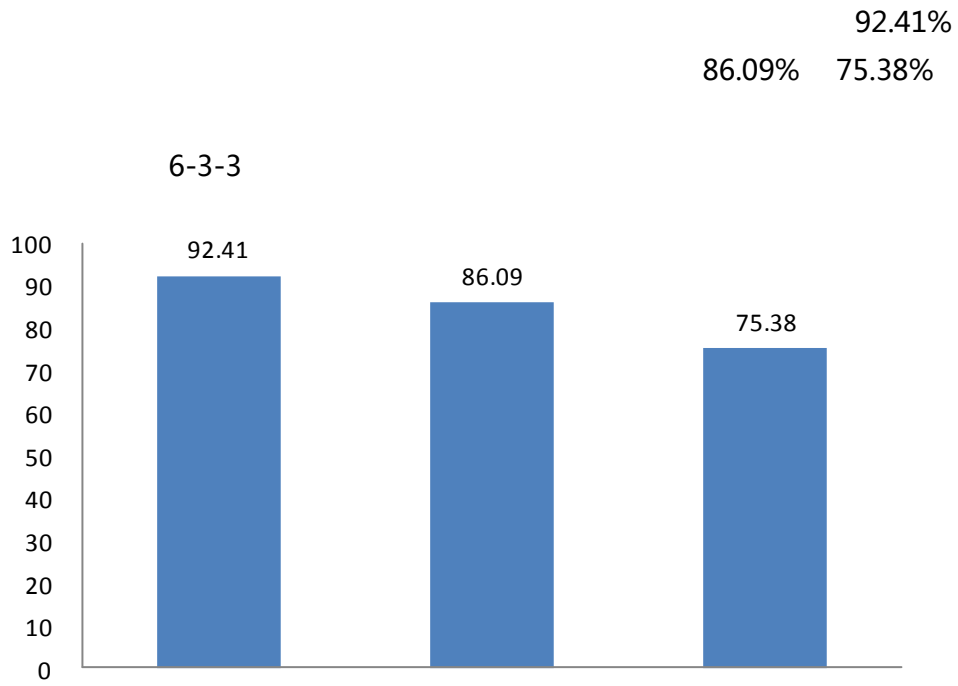
2017

6-3-2  
4362.54



6-3-2 2017

2017



6-3-3 2017

%

2017

2017  
6-4-1

96.85%



6-4-1 2017

2017

2017

5

38

37.79%  
2.5%

6.26%

2017

23

99

